



## ALL ON 4 TREATMENT SEQUENCE

### 1. Impression – 2 techniques

BEFORE MAKING IMPRESSIONS, VERIFY ABUTMENT TRAJECTORY, THERE SHOULD BE SUFFICIENT RESTORATIVE MATERIAL AROUND ACCESS HOLES

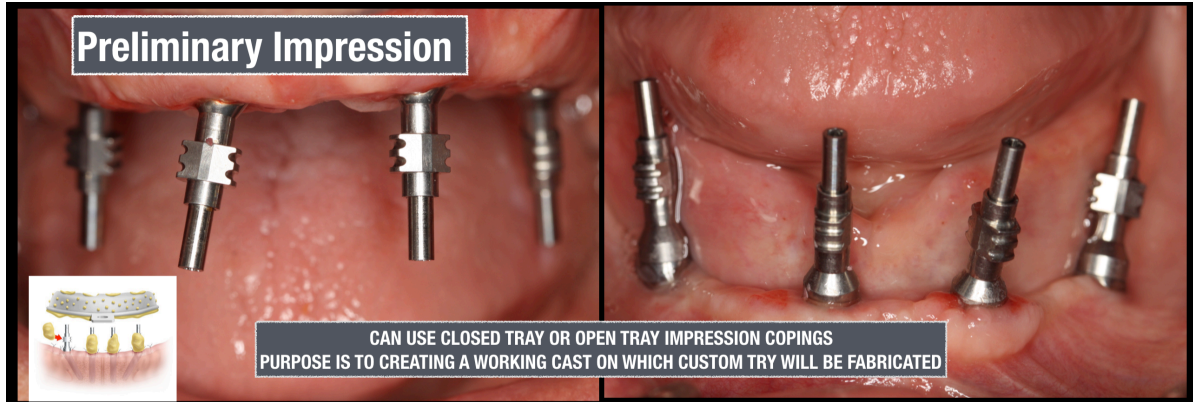


### Technique 1 – 2 Step Impression technique

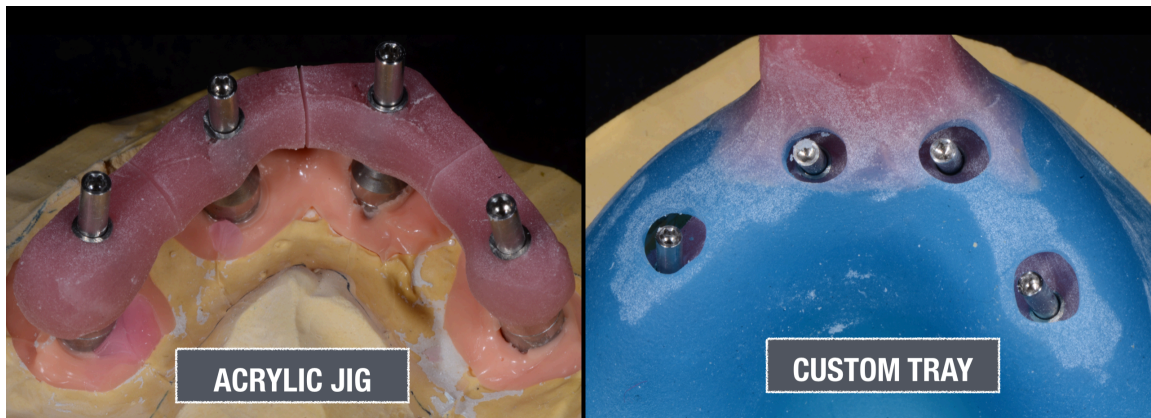
#### **TWO STAGE IMPRESSION**

1. Initial cast made from preliminary impression
2. Impression copings placed on cast
3. Acrylic jigs fabricated - Minimize shrinkage
4. Fabricate custom tray - Limits material
5. Jigs transferred to mouth
6. Joined with acrylic resin
7. Pick up impression
8. Pour in low expansion die stone

INITIAL IMPRESSION MADE WITH OPEN/CLOSED TRAY IMPRESSION COPINGS  
THIS IS TO PRODUCE A CAST ON WHICH A CUSTOM TRAY WILL BE MADE.



ACRYLIC JIG MADE ON CAST USED TO LINK IMPRESSION COPINGS TOGETHER FOR  
MASTER IMPRESSION



PLACE JIGS IN MOUTH VERIFY SEATING, CONNECT JIGS WITH GC RESING. TRY  
TRAY IN ENSURE IT SEATS OVER RESIN JIG. APPLY ADHESIVE TO TRAY . LOAD



TRAY WITH HEAVY BODY IMPRESSION MATERIAL, INJECT LIGHT BODY ONTO TISSUE SURFACE

TECHNIQUE 2 - 1 STEP IMPRESSION TECHNIQUE

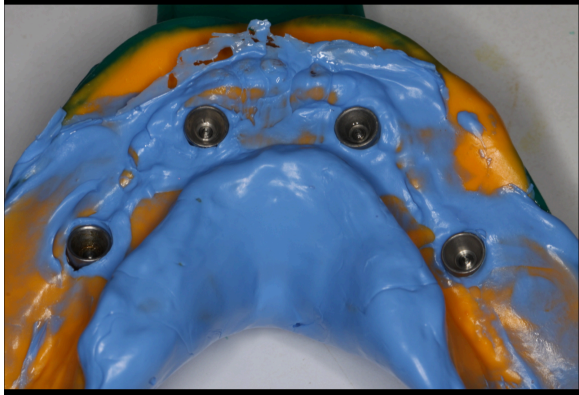
### ONE STAGE IMPRESSION - NO LITERATURE

1. Open Tray Impression copings
2. Connect with stainless steel rods using resin
3. Open stock tray - LOSE RIGIDITY
4. Place light body on tissue surface
5. PVS putty in tray
6. Make impression

PLACE OPEN TRAY IMPRESSION COPINGS IN MOUTH, LINK WITH STAINLESS STEEL RODS/OLD LAB BURS, CONNECT WITH GC RESIN . HOLLOW OUT STOCK TRAY



APPLY TRAY ADHESIVE TO TRAY, MIX BASE AND CATALYST AND MIX AND LOAD INTO TRAY. INJECT LIGHT BODY DIRECTLY ONTO TISSUE. PLACE TRAY, CLEAR SCREW ACCESS HOLES

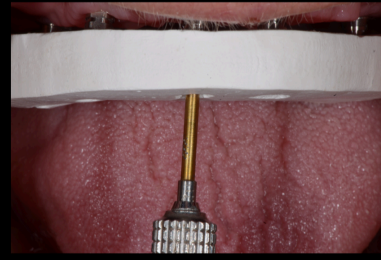


1. Inject Light body around implants
2. Fill stock tray with Putty (PVS) shore hardness of 80

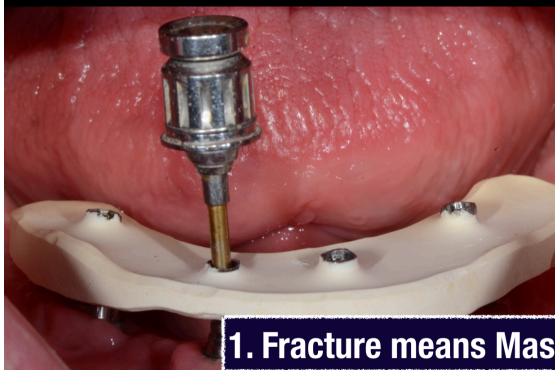
## 2. VERIFICATION JIG

### Verification Jig

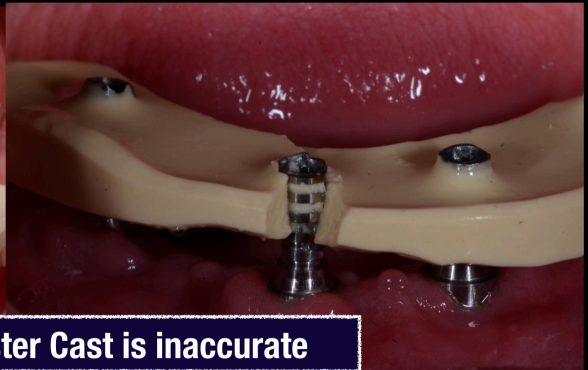
1. To verify accuracy of cast
2. Needed before framework fabricated
3. Made on temporary cylinders
4. Made from impression plaster
5. Try In with single screw
6. Radiographic verification



1. If Plaster jig breaks, cast is inaccurate
2. New impression required

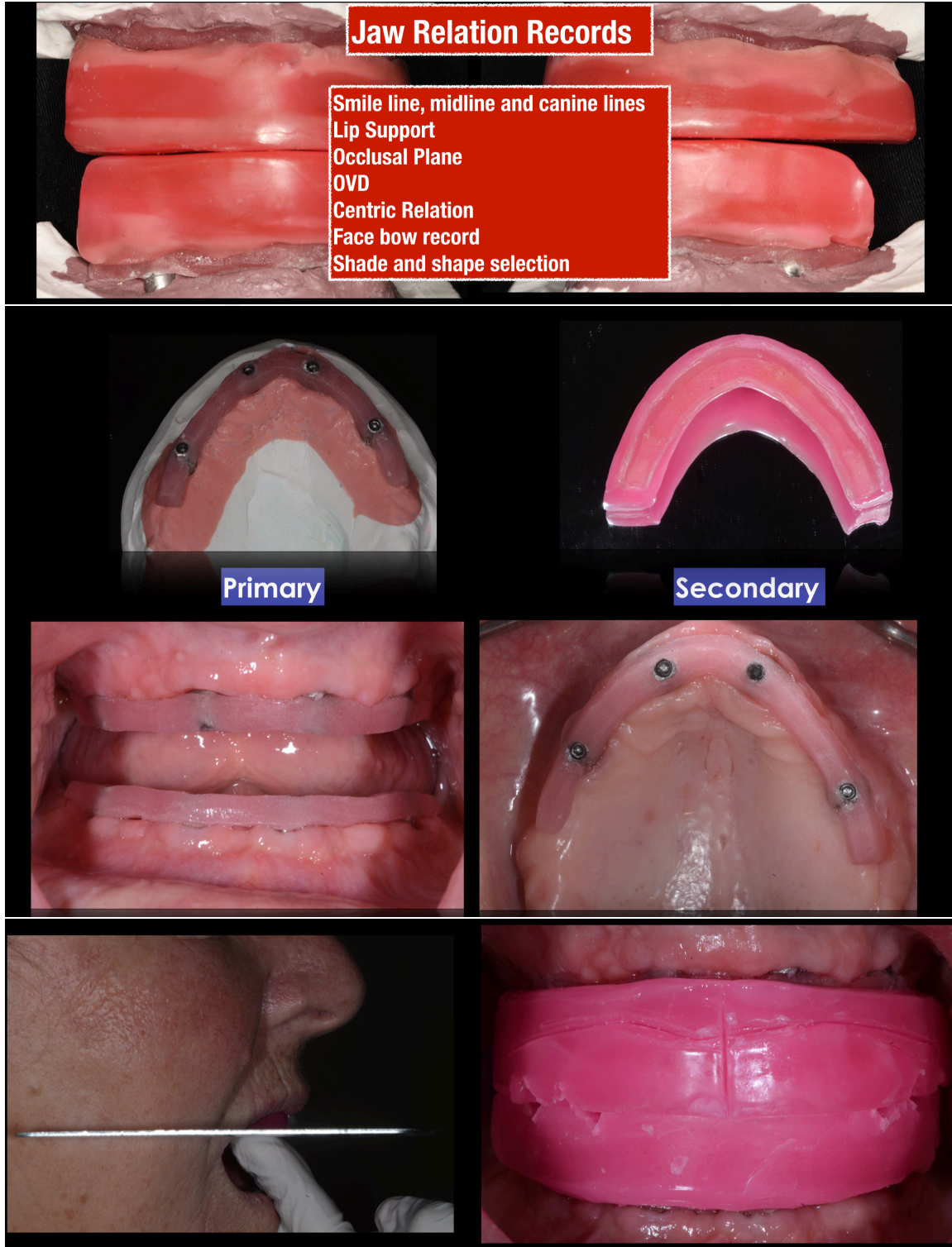


1. Fracture means Master Cast is inaccurate



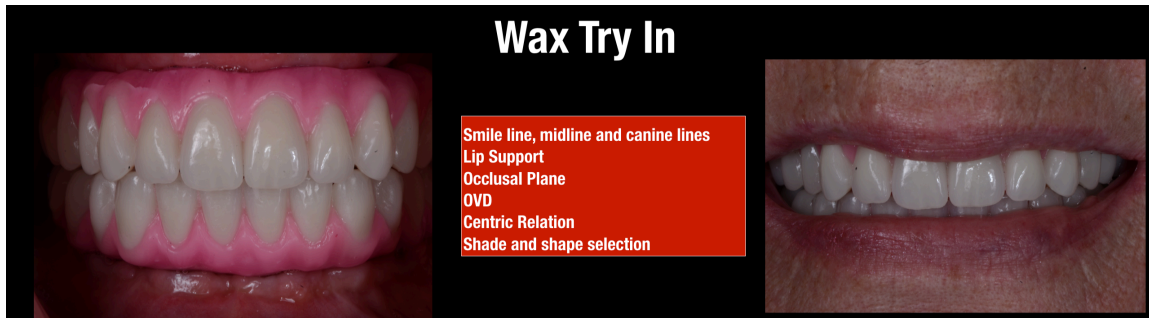
IF IT FRACTURES, NEW IMPRESSION NEEDS TO BE MADE

3. JAW RELATION RECORDS – DONE WITH TWO PIECE RIM. PRIMARY PART SCREWS ONTO ABUTMENTS/IMPLANTS. SECONDARY RIM FITS OVER PRIMARY RIM.

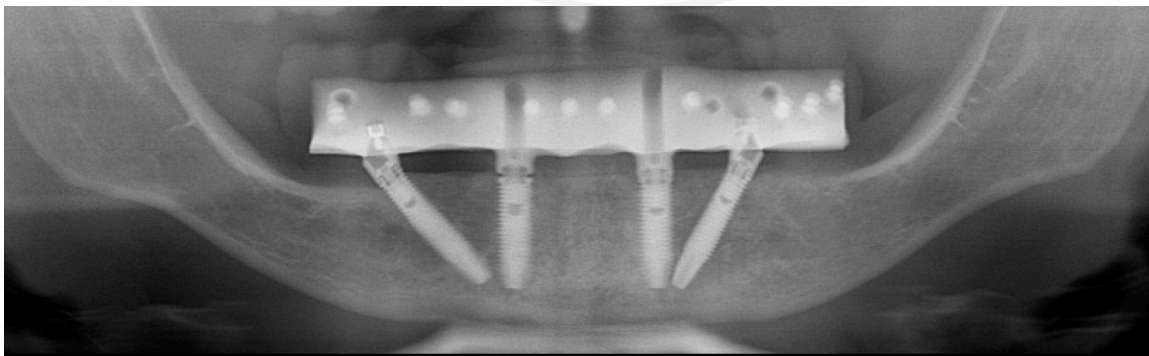
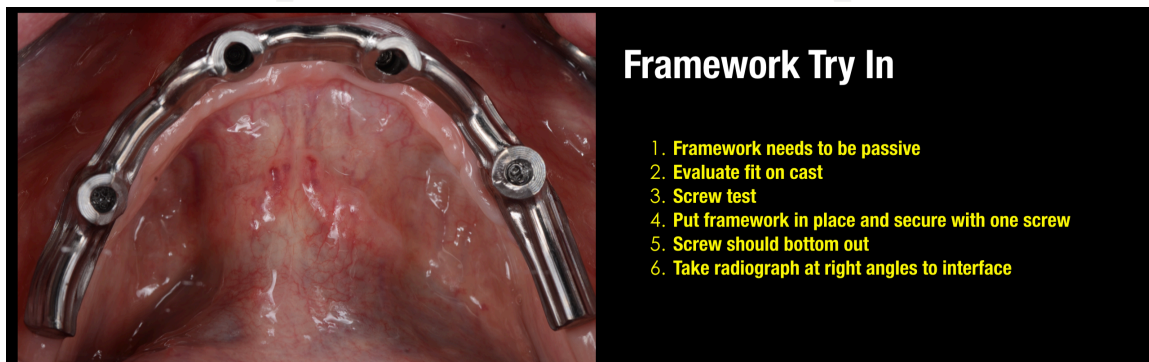




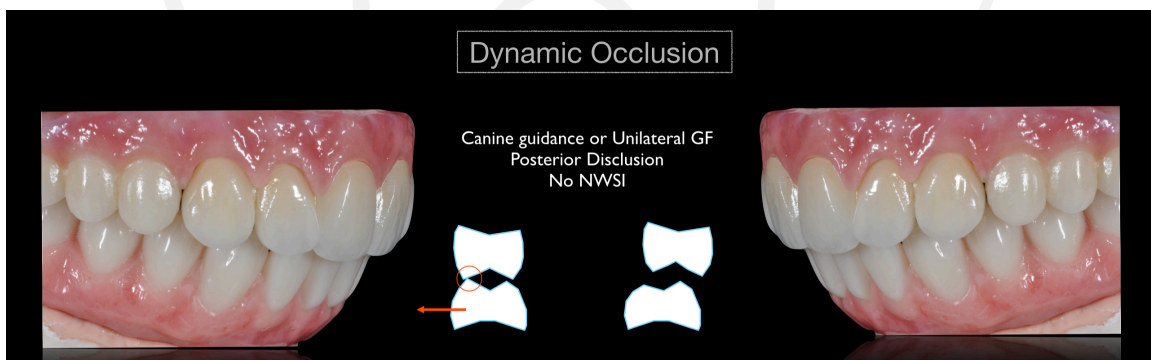
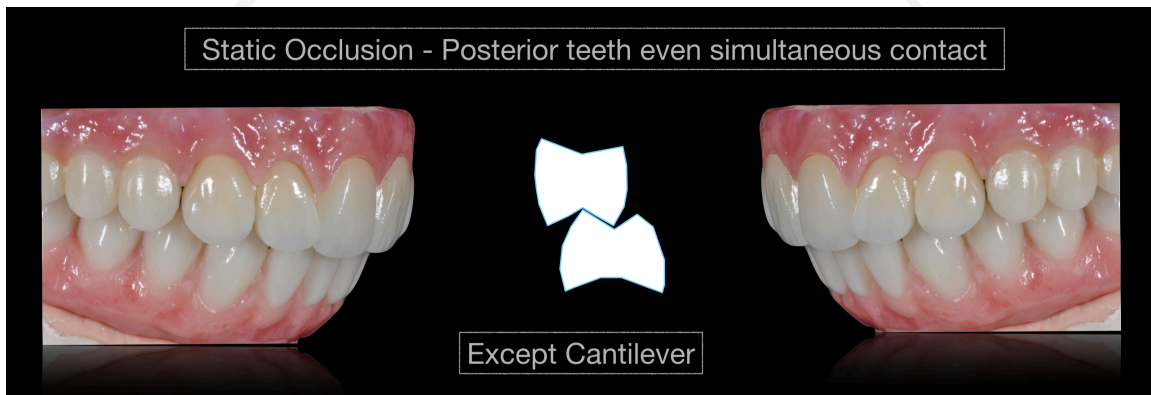
#### 4. WAX TRY IN



#### 5. TITANIUM FRAMEWORK TRY IN VERIFY SEATING, TAKE RADIOGRAPH AT INTERFACE



6. OCCLUSION – ADJUST OCCLUSION. CONTACT ON PREMOLARS AND CANINES, NO CONTACT ON CANTILEVER. ANTERIOR TEETH SHOULD DRAG SHIMSOCK.



### 7. MODIFICATIONS FOR ZIRCONIA







ACRYLIC PROTOTYPE SCANNED AND MILLED IN ZIRCONIA



BISQUE BAKE TRY IN



FINAL DELIVERY